



RECP #: 752680

RECORDED 5/8/2019 AT 1:11 PM BK# 2620 PG# 1722
Debra K. Lee, CLERK OF LARAMIE COUNTY, WY PAGE 1 OF 1

STATE OF WYOMING CORNER RECORD

(In compliance with the CORNER PERPETUATION AND FILING ACT, Wyoming Statutes, 1997 Section 33-29-140, et. seq., and the Rules and Regulations of the Board of Registrations for Professional Engineers and Professional Land Surveyors)

NORTHEAST CORNER SECTION 6, T. 18 N., R. 61 W., 6TH P.M., LARAMIE COUNTY, WYOMING

GLO: SET A SANDSTONE 24X20X3, 18 IN DEEP WITH 1 MARK ON THE WEST AND 5 ON THE EAST FACE FOR CORNER TO SECTIONS 5, 6, 31, 32.

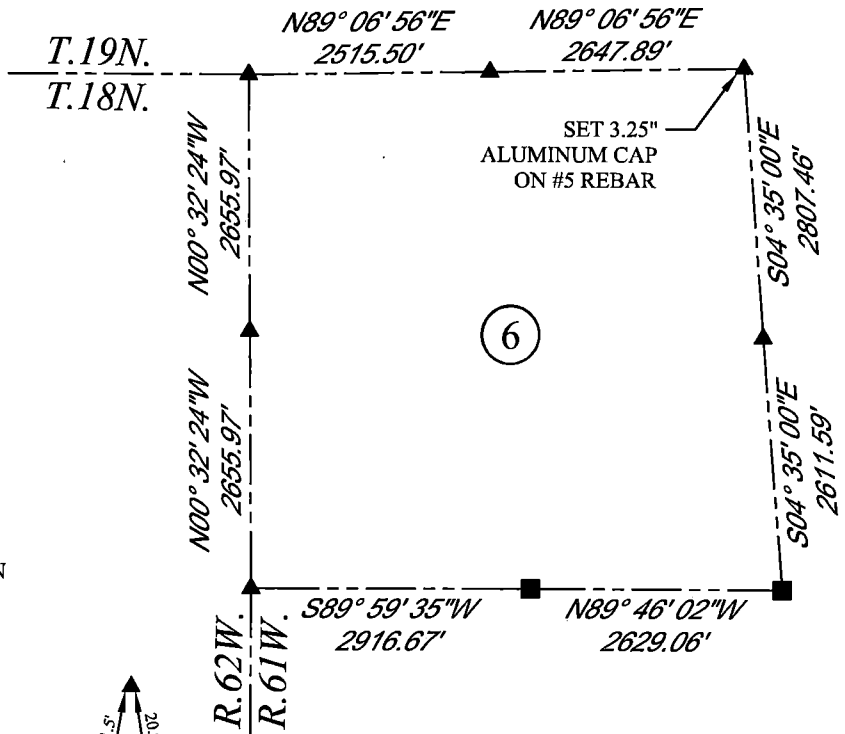
FOUND: NOTHING

SET: SET A 3.25" ALUMINUM CAP ON #5 REBAR, 0.1' BELOW SURFACE MARKED AS SHOWN. SET (2) MAG NAILS IN FENCE POSTS AS SHOWN. POSITION RE-ESTABLISHED BY SINGLE PROPORTION.

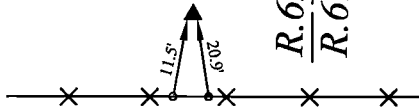
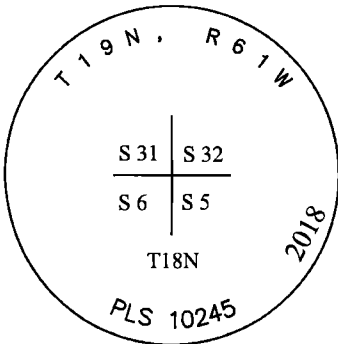


SCALE: NONE

NORTH DETERMINED BY
G.P.S OBSERVATIONS



SET 3.25" ALUMINUM CAP, STAMPED AS SHOWN



LEGEND:

- FOUND BLM CAP
- FOUND USFS CAP
- FOUND STONE
- FOUND PRIVATE MONUMENT
- ◆ CALCULATED POSITION
- ▲ SET MONUMENT (LS10245)
- SECTION LINE

DATE OF FIELD WORK: 09/20/2018 OFFICE REFERENCE: MERIDEN

CROSS INDEX DIAGRAM

	1	2	3	4	5	6	7	8	9	10	11	12	13	14	15	16	17	18	19	20	21	22	23	24	25	
A																										
B																										
C																										
D																										
E																										
F																										
G																										
H																										
J																										
K																										
L																										
M																										
N																										
O																										
P																										
Q																										
R																										
S																										
T																										
U																										
V																										
W																										
X																										
Y																										
Z																										
	1	2	3	4	5	6	7	8	9	10	11	12	13	14	15	16	17	18	19	20	21	22	23	24	25	

WOOD
2615 AVIATION DRIVE
SHERIDAN, WY 82801
PH: 307-675-6400



THIS CORNER RECORD WAS
PREPARED BY ME OR UNDER
MY DIRECTION AND
SUPERVISION,
SEAL AND SIGNATURE

